
KIT PART NUMBER 4744581
INSTRUCTIONS FOR INSTALLING A FREEZER EVAPORATOR FAN TIME
DELAY AND FREEZER TOP SHROUD
IN 474, 475 & 476 FROZEN FOOD MODULES (DOMESTIC)

CHECK THE PARTS RECEIVED IN THE KIT WITH THE PARTS LIST IN THESE INSTRUCTIONS. IF ANY PARTS ARE MISSING, CONTACT THE NATIONAL VENDORS PARTS DEPARTMENT IMMEDIATELY.

Read these instructions carefully before installing the kit.
Keep these instructions for part numbers and for future reference.

This kit contains the following :

PART NUMBER	DESCRIPTION	QTY
1709006	JUMPER - MAIN SW. TO BREAKER	1
2221032	SPEED NUT BALLAST	1
3104053	TAPE - INSULATION	8"
3152081	COVER - SCREW TIP	1
4114010	SCREW - #8 - 15 X .75 LG. - S.S.	2
4402038	SCREW - #8 - 15 X .38 STAINLESS	2
4404004	SCREW - #8 - 18 X 2.5 T/HHS	1
4740066	INSTALLATION INSTRUCTIONS - KIT 4744581	1
4744031	SEAL - .50 X .50	183"
4844034	SHROUD - TOP - FREEZER	1
4844042	BRACKET - EVAPORATOR SHROUD	2
4974053	THERMOSTAT - AUTO RESET - FRZR MOD	1
6138181	WASHER - PLATE	1
7844004	TIME - DELAY - EVAP FAN - FREEZER - 5 MIN	1

NOTE

Remove all products from the Frozen Food Module before starting this installation procedure.

Part I. Wiring Changes (see figure 1):

1. Turn power OFF before starting this installation.
2. Disconnect the wire from NC terminal 5 on the relay and connect to terminal 3 on the freezer evaporator fan time delay.

NOTE

*The terminal layout on the relay is typical but may not be identical for all units.
Ensure that the wire to be disconnected supplies the evaporator fan.*

3. Connect one end of the jumper (1709006) to NC terminal 5 on the relay (where the wire disconnected in the previous step was attached). Connect the other end of the jumper to terminal 1 on the freezer evaporator fan time delay.

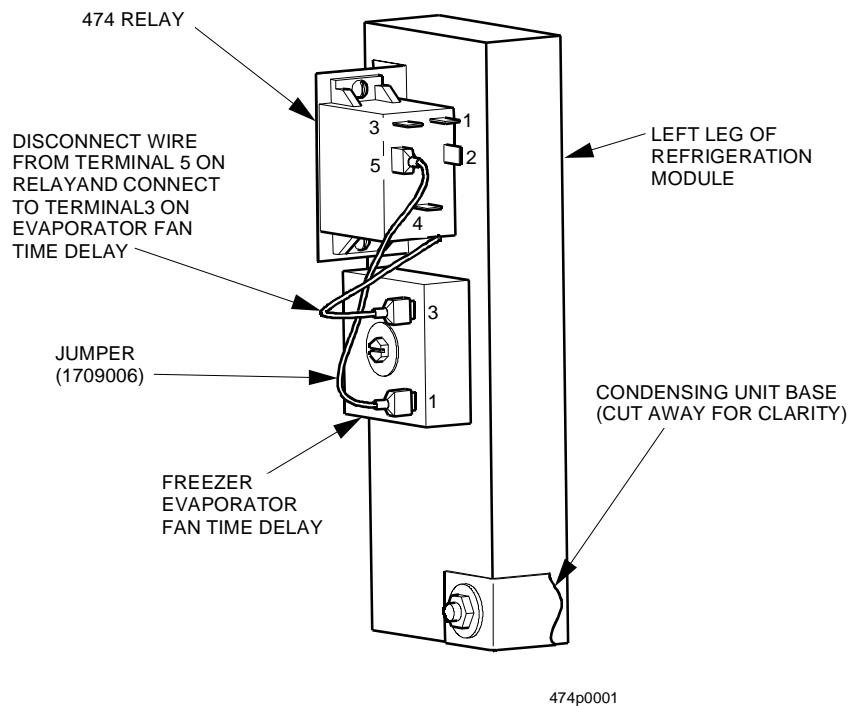


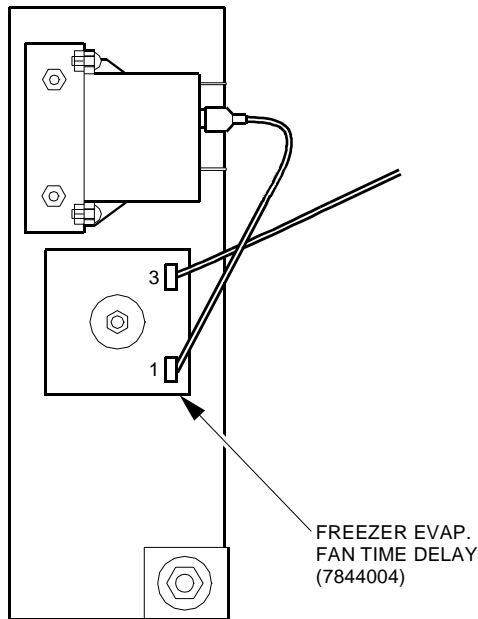
Figure 1

Part II. Freezer Evaporator Fan Time Delay Installation (see figures 2 and 3):

NOTE

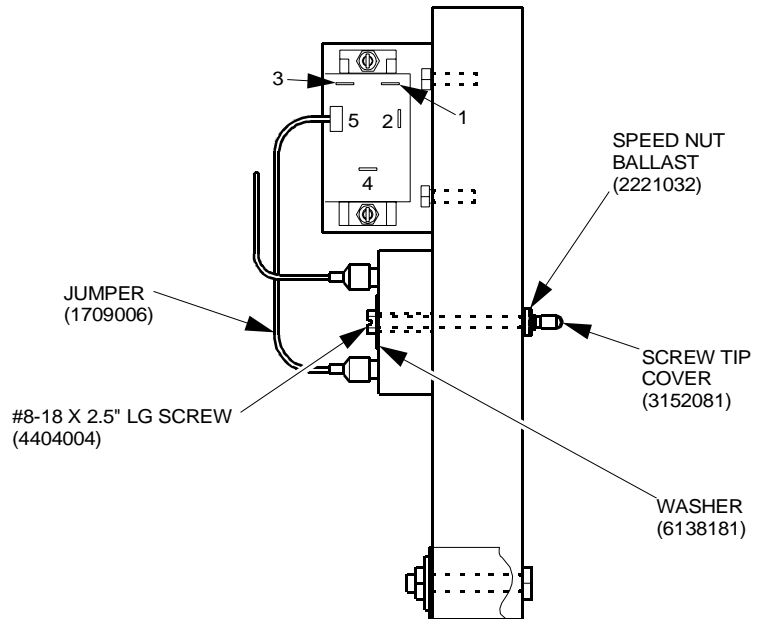
You may need to move the relay up on the refrigeration module leg to allow the time delay to be located below the relay.

1. Below the relay, install the freezer evaporator fan time delay (7844004) into the left leg of the refrigeration module using a plate washer (6138181), a #8-18 x 2.5 long tap screw (4404004), a speed nut ballast (2221032) and a screw tip cover (3152081).



474p0002

Figure 2



474p0003

Figure 3

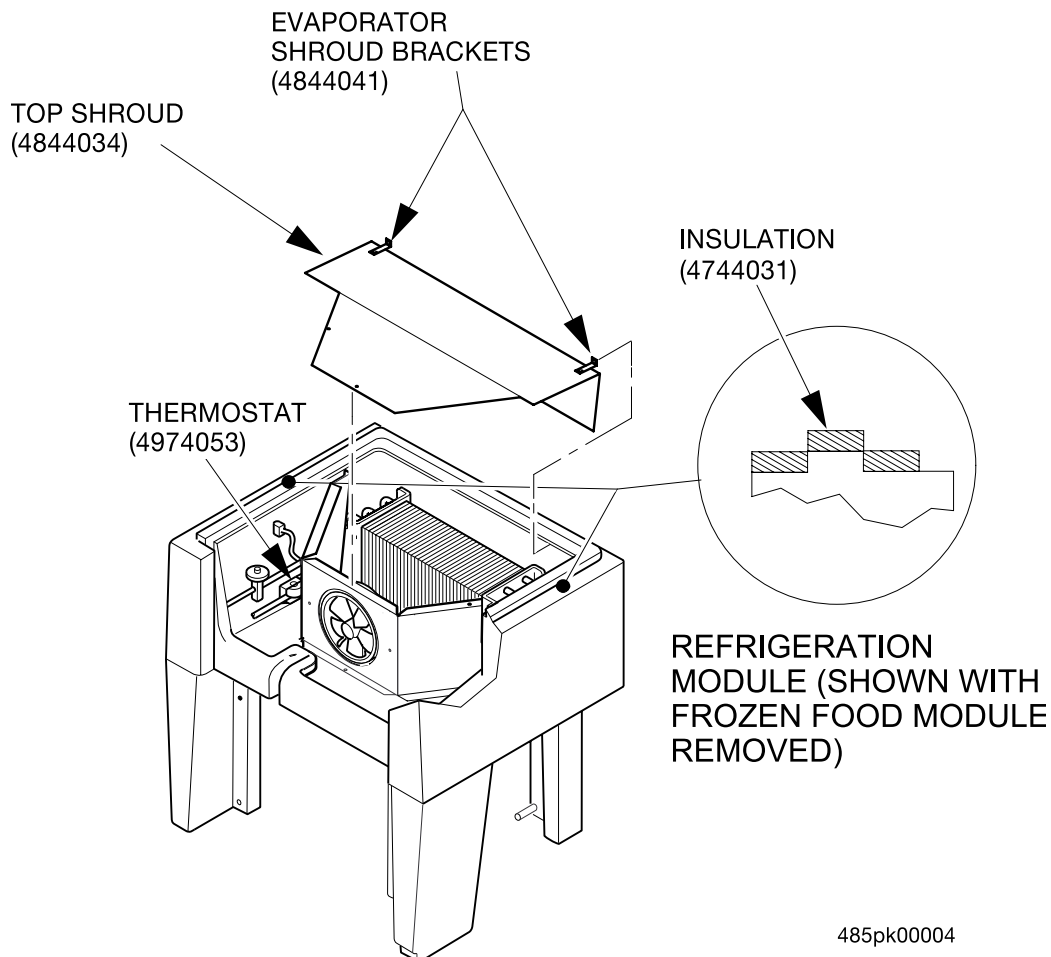
Part III. Freezer Top Shroud Installation (see figure 4):

1. Remove the wiring connections to the refrigeration module and to the frozen food module and mark as necessary for reattachment.
2. Remove the frozen food module/refrigeration module assembly from the cabinet.
3. Remove frozen food trays from frozen food module.
4. Disassemble the frozen food module from the refrigeration module, removing and saving all necessary screws. Set the frozen food module aside, placing it on its back to avoid damage.

NOTE

Ensure that the Frozen Food Module is placed on its back to avoid damage to the sheet metal parts on the bottom of the module.

5. Remove any gasket or other material on the refrigeration module where the frozen food module mates to refrigeration module.



485pk00004

Figure 4

6. Remove and discard the top shroud, saving the three (3) screws.
7. Install the new freezer top shroud (4844034) with the three (3) screws removed previously.

-
8. Install the new evaporator shroud brackets (4844042) as follows: Insert two (2) #8-18 x .75 stainless steel screws through the short end of the angle into the refrigeration module back, and two (2) #8-18 x .38 stainless steel screws through the long end of the angle into the top shroud.
 9. Remove the cork tape surrounding the old thermostat.
 10. Disconnect the electrical connection for the old thermostat. Mark if necessary.
 11. Remove the old thermostat wiring harness from the wiring clamp.
 12. Replace the old thermostat with new thermostat (4974053). Place the thermostat as close to evaporator bypass cutoff sheet metal as possible.

NOTE

Ensure that the new thermostat sensor cradles the suction tube.

13. Apply new cork tape around the new thermostat.

NOTE

Ensure that the cork tape completely encloses the new thermostat.

14. Connect the new thermostat's electrical connection to the harness as previously disconnected.
15. Place the new thermostat wiring harness into the wiring clamp.
16. Place the seal (4744031) around the lips of the refrigeration module.
17. Apply a bead of silicone sealant around the intersection between the insulation sheet and refrigeration module.
18. Apply a large bead of silicone sealant across the insulation sheet top and the seal around the refrigeration module.
19. Replace the frozen food module onto the refrigeration module, taking care not to damage the seal on the refrigeration module. Reinstall all screws that were previously removed.
20. Replace the frozen food module/refrigeration module assembly back into the cabinet.
21. Reconnect the wiring that was previously removed.
22. Turn power ON to the cabinet.